



ĐšĐ, ŃĐ°Đ¹Ń•Đ°Đ
Ń€Đ, Ń•ŃĐ^{3/4}Ń€Đ°Đ^{1/2}Ń, Đ•ĐμĐ±ĐμŃ•ĐμĐ^{1/2}
Đ”Ń€Đ°Đ°Đ^{3/4}Đ^{1/2}

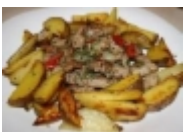
Đ•Đ•Đ’Đ•Đ;Đ•Đ• Đ”Đ Đ•ĐšĐžĐ•

Đ-Ń•Ń,Đ,Ń• Đ^{3/4}Ń, Ń•Đ²Đ,Đ^{1/2}Ń•Đ°Đ^{3/4} Đ^{1/4}ĐμŃ•Đ^{3/4}



97. Đ•ŃžŃ,Đ^{3/4} Đ;Đ°Đ^{1/2}Đ,Ń€Đ°Đ^{1/2}Đ^{3/4} Ń•Đ²Đ,Đ^{1/2}Ń•Đ°Đ^{3/4} Đ;Đ^{3/4}
Đ,Đ^{1/4}Đ;ĐμŃ€Đ°Ń,Đ^{3/4}Ń€Ń•Đ°Đ, Ń• Ń,,ŃšŃ•Ń,ŃšŃ†Đ, Đ,
Đ•ĐμĐ»ĐμĐ^{1/2}Ń†ŃfŃ†Đ,
Đ»Đ².7.70

76Đ•Đ•ŃžŃ,Đ^{3/4} Đ;Đ°Đ^{1/2}Đ,Ń€Đ°Đ^{1/2}Đ^{3/4} Ń•Đ²Đ,Đ^{1/2}Ń•Đ°Đ^{3/4} Đ;Đ^{3/4} Đ,Đ^{1/4}Đ;ĐμŃ€Đ°Ń,Đ^{3/4}Ń€Ń•Đ°Đ, /Ń•
Ń,,ŃšŃ•Ń,ŃšŃ†Đ, Đ, Đ•ĐμĐ»ĐμĐ^{1/2}Ń†ŃfŃ†Đ, / 800 Đ³Ń€. [\[Đ”Đ^{3/4}Đ;ŃšĐ»Đ^{1/2}Đ,Ń•ĐμĐ»Đ^{1/2}Đ°
Đ,Đ^{1/2}Ń,Đ^{3/4}Ń€Đ^{1/4}Đ°Ń†Đ,Ń•...\]](#)



80.ĐŸŃšŃ€Đ††ĐμĐ^{1/2}Đ^{3/4} Ń•Đ²Đ,Đ^{1/2}Ń•Đ°Đ^{3/4} Đ²
Ń•Đ»Đ°Đ’Đ°Đ^{3/4}-Đ°Đ,Ń•ĐμĐ» Ń•Đ^{3/4}Ń• Ń•ŃšŃ•
Đ•ĐμĐ»ĐμĐ^{1/2}Ń†ŃfŃ†Đ, 700Đ³Ń€
Đ»Đ².8.40

[\[Đ”Đ^{3/4}Đ;ŃšĐ»Đ^{1/2}Đ,Ń•ĐμĐ»Đ^{1/2}Đ° Đ,Đ^{1/2}Ń,Đ^{3/4}Ń€Đ^{1/4}Đ°Ń†Đ,Ń•...\]](#)



89. $\text{D}_i \text{D}^2 \text{D}_j \text{D}^{1/2} \tilde{\text{N}} \cdot \text{D}^0 \text{D}^{3/4} \text{D}^{1/2} \text{D}^\circ \text{D} \gg \text{D} \mu \text{D}^{1/2} \tilde{\text{N}}, \text{D}_j \tilde{\text{N}} \ddagger \text{D}^\circ \text{D}_j \text{D}^2$
 $\text{D}^\circ \text{D}_j \tilde{\text{N}} \cdot \text{D} \mu \text{D} \gg \text{D}^{3/4} - \tilde{\text{N}} \cdot \text{D} \gg \text{D}^\circ \text{D} \tilde{\text{N}} \check{\text{D}}^\circ - \text{D} \gg \tilde{\text{N}} \check{\text{Z}} \tilde{\text{N}}, \text{D}^{3/4} - \tilde{\text{N}} \cdot \text{D}^{3/4} \text{D} \gg \text{D} \mu \text{D}^{1/2} \tilde{\text{N}} \cdot \text{D}^{3/4} \tilde{\text{N}} \cdot$
 $\tilde{\text{N}} \cdot \tilde{\text{N}} \check{\text{Z}} \tilde{\text{N}} \cdot \text{D} \cdot \text{D} \mu \text{D} \gg \text{D} \mu \text{D}^{1/2}$
 $\text{D} \gg \text{D}^2.8.10$

[$\text{D}^\circ \text{D}^{3/4} \text{D}_i \tilde{\text{N}} \check{\text{D}} \gg \text{D}^{1/2} \text{D}_j \tilde{\text{N}}, \text{D} \mu \text{D} \gg \text{D}^{1/2} \text{D}^\circ \text{D}_j \text{D}^{1/2} \tilde{\text{N}}, \text{D}^{3/4} \tilde{\text{N}} \in \text{D}^{1/4} \text{D}^\circ \tilde{\text{N}} \ddagger \text{D}_j \tilde{\text{N}} \cdot \dots$]



86. ԳլճՉԳ, Գ^{1/2}Ն•Ծ⁰Գ^{3/4} Ն• Ծ⁰Ն•ԵՆ, Գ^{3/4}Ն, Գ, Գ² Ն•Գ^{3/4}Ն• Գ,
Գ•ԳմԳ»ԳմԳ^{1/2}Ն‡ՆfՆ‡Գ, 800 ԳՅԵ.
Գ»Գ².7.30

[\[Գ"Գ^{3/4}Գ, ՆՏԳ»Գ^{1/2}Գ, Ն, ԳմԳ»Գ^{1/2}Ծ Գ, Գ^{1/2}Ն, Գ^{3/4}ՆԵԳ^{1/4}Գ⁰Ն‡Գ, Ն•...\]](#)



94. ԳՂԳ⁰Գ^{1/2}Գ, ՆԵԳ⁰Գ^{1/2}Գ^{3/4} Ն•Գ²Գ, Գ^{1/2}Ն•Ծ⁰Գ^{3/4} Գ²
Գ⁰Գ, Ն•ԳմԳ»Գ^{3/4}-Ն•Գ»Գ⁰Գ ՆՏԳ⁰ Ն•Գ^{3/4}Ն• 700 ԳՅԵ.
Գ»Գ².8.30

[\[Գ"Գ^{3/4}Գ, ՆՏԳ»Գ^{1/2}Գ, Ն, ԳմԳ»Գ^{1/2}Ծ Գ, Գ^{1/2}Ն, Գ^{3/4}ՆԵԳ^{1/4}Գ⁰Ն‡Գ, Ն•...\]](#)



76. ԳՂՆՏՆԵԳՂԳմԳ^{1/2}Գ^{3/4} Ն•Գ²Գ, Գ^{1/2}Ն•Ծ⁰Գ^{3/4} Գ, Գ^{3/4}
Գ, Գ^{1/4}Գ, ԳմՆԵԳ⁰Ն, Գ^{3/4}ՆԵՆ•Գ⁰Գ, Ն• Ն, ՆՏՆ•Ն, ՆՏՆ‡Գ, Գ,
Գ•ԳմԳ»ԳմԳ^{1/2}Ն‡ՆfՆ‡Գ, 800ԳՅԵ
Գ»Գ².8.10

[\[Գ"Գ^{3/4}Գ, ՆՏԳ»Գ^{1/2}Գ, Ն, ԳմԳ»Գ^{1/2}Ծ Գ, Գ^{1/2}Ն, Գ^{3/4}ՆԵԳ^{1/4}Գ⁰Ն‡Գ, Ն•...\]](#)



95. ԳՂՆՏՆԵԳՂԳմԳ^{1/2}Գ^{3/4} Ն•Գ²Գ, Գ^{1/2}Ն•Ծ⁰Գ^{3/4} Գ^{1/4}ԳմՆ•Գ^{3/4} Գ, Գ^{3/4}
Գ⁰Գ, Ն, Գ⁰Գ¹Ն•Գ⁰Գ, 400 ԳՅԵ.
Գ»Գ².8.10

[\[Գ"Գ^{3/4}Գ, ՆՏԳ»Գ^{1/2}Գ, Ն, ԳմԳ»Գ^{1/2}Ծ Գ, Գ^{1/2}Ն, Գ^{3/4}ՆԵԳ^{1/4}Գ⁰Ն‡Գ, Ն•...\]](#)



82. ԳլճՉԳ, Գ^{1/2}Ն•Ծ⁰Գ^{3/4} Ն• Ծ⁰Գ, Ն, Գ⁰Գ¹Ն•Ծ⁰Գ,
Գ³ՆՏԳ±Գ, Գ±Գ⁰Գ^{1/4}Գ±ՆfԳ⁰ Գ, Գ•ԳմԳ»ԳմԳ^{1/2}Ն‡ՆfՆ‡Գ, 800 ԳՅԵ.
Գ»Գ².6.90

[\[Գ"Գ^{3/4}Գ, ՆՏԳ»Գ^{1/2}Գ, Ն, ԳմԳ»Գ^{1/2}Ծ Գ, Գ^{1/2}Ն, Գ^{3/4}ՆԵԳ^{1/4}Գ⁰Ն‡Գ, Ն•...\]](#)

-
-
-
-

« « Գ•Գ⁰Ն‡Գ⁰Գ»Գ^{3/4}
« ԳՂՆԵԳմԳ՛.
1
2

-
-

[DjD»DμD´D². »](#)
[DšÑ€D°D¹ »»](#)

D DμD·ÑfD»Ñ,D°Ñ,D, 1 - 20 D¾Ñ, 24